

DATA SHEET

Lanleys™ Biotechnologies Laboratory GST (6F5)

CATALOG

Mab1012

BACKGROUND

Glutathione S-transferase (GST) (EC 2.5.1.18) is an enzyme that catalyzes the conjugation of the reduced form of glutathione (GSH) to xenobiotic substrates to detoxify endogenous compounds. The GST encoded by parasitic worm *Schistosoma japonicum*, which has little homology to its mammalian counterpart, had been widely used as a fusion partner for expression and purification of foreign proteins in *E. coli*. GST-tag is easy to detect and it has little effect on the biological function of the protein of interest. Alternatively, a GST-tag can be removed by enzymatic cleavage on particular site, which was expressed from a well-designed plasmid vector.

SOURCE

This is a mouse monoclonal antibody raised against the full-length GST of *S. japonicum* origin.

GENE SYMBOL

GST (*S. japonicum*)

ISOTYPE

IgG_{2a}

PHYSICAL FORM

Freeze-dried powder from 1 × PBS solution

SPECIFICITY

This antibody detects GST-tag alone and its fusion proteins.

MOLECULAR WEIGHT

26 kDa (GST)

APPLICATIONS

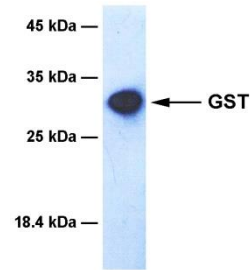
Western blotting (WB, dilution range: 1:1,000 – 10,000). Other applications have not been tested.

STORAGE

Store freeze-dried powder at 2 - 8°C upon arrival. When ready to use, rehydrate with 0.1 ml dH₂O and centrifuge if not clear. For long-term storage, make aliquots and keep them at -20°C or below. Avoid repeated freezing and thawing cycles.

DATA

>> Western blot: *E. coli* bacterial lysate expressing recombinant *S. japonicum* GST.



IMPORTANT NOTE

This product is intended for research use only, not for use in human therapeutic or diagnostic procedures.

230 Bernard Belleau, Suite 28-121A, Laval, Québec, Canada H7V 4A9; <https://www.lanleys.com>

ORDER: order@lanleys.com; TECHNICAL SUPPORT: support@lanleys.com